



GIANETTI

CUSTOM YACHTS



WWW.GIANETTIYACHTS.COM



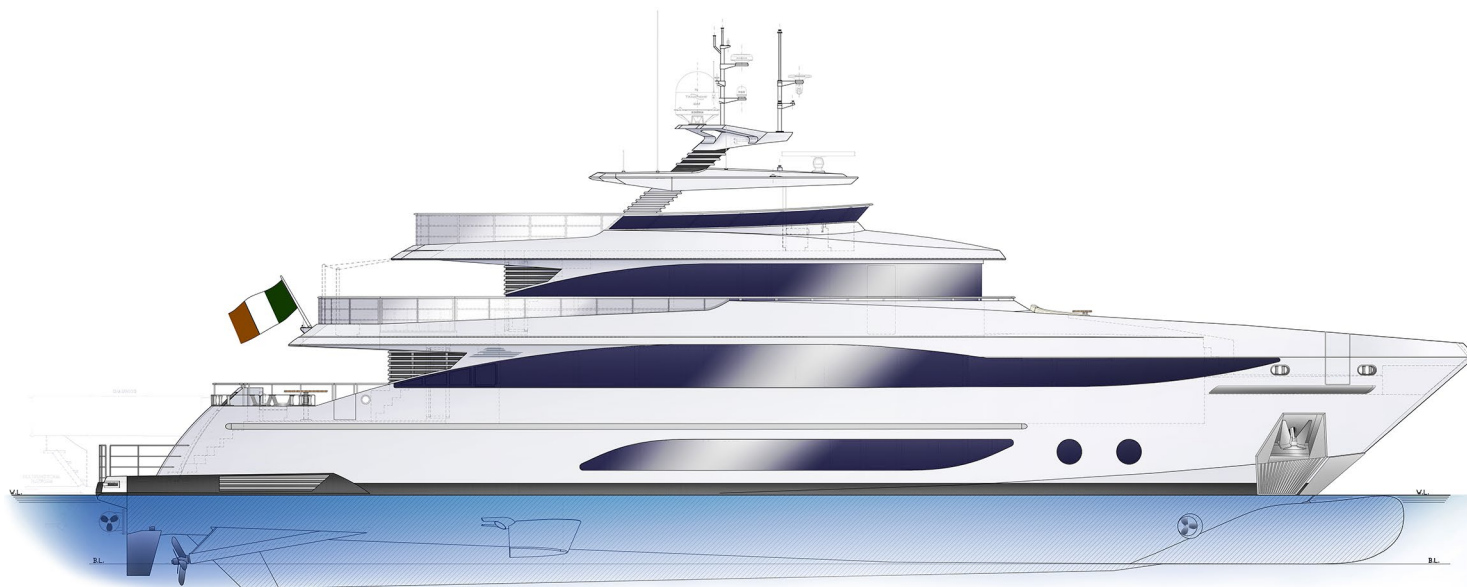
Beautifully crafted, elegantly designed and highly engineered, the MIRAGE 401 harnesses the adventurous spirit of the sea whilst offering the comfort and luxury of a second home. Designed and lovingly custom built in Italy, this unique 38.5 metre, wide-body aluminium displacement hull yacht seamlessly fuses pioneering technology and engineering with a contemporary design

Designed to comfortably sleep 10 passengers with 3 generous decks, the unique design offers a luxurious sense of space. The hull and propulsion have been optimised for the full range of most frequently used speeds of 10-14 knots and cruising speeds in semi-displacement mode. The MIRAGE 401 is near completion and could be ready to sail the high seas by 2022 yet can still be tailored to suit the needs and demands of any discerning client.





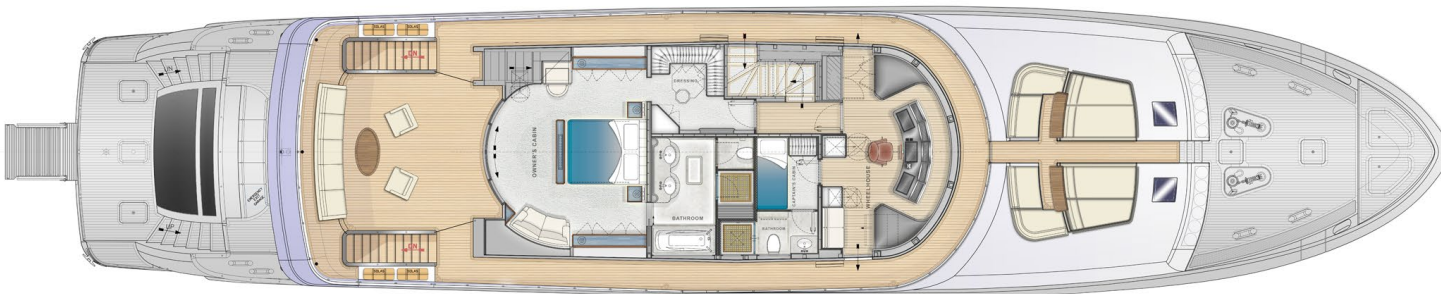




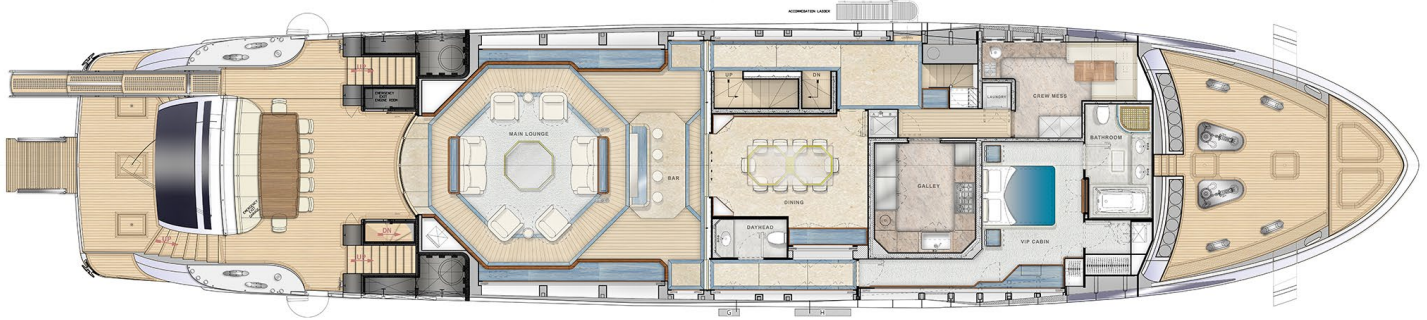
Sun Deck | Proposed Configuration



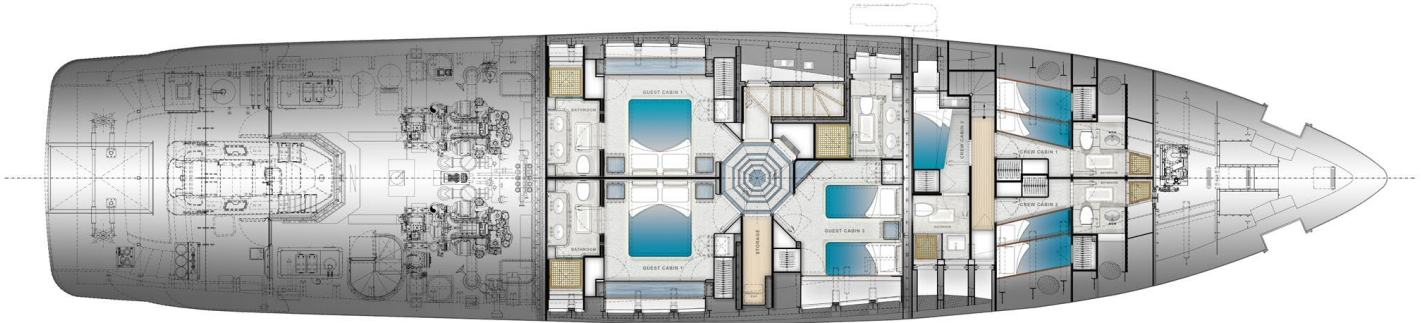
Upper Deck | Proposed Configuration



Main Deck | Proposed Configuration



Lower Deck | Proposed Configuration



















GENERAL

Hull type :	Wide-body, Displacement Hull, Twin Propeller
Hull :	Aluminium
Superstructure :	Aluminium
Classification :	Bureau Veritas , I ± HULL - MACH Charter Yacht – Motor – A Navigation Limited to 60 Nautical Miles COMF(Y)
Cabins :	Full-beam owner's master cabin, VIP cabin, two double guest cabins, one twin guest cabin
Guests :	10
Crew :	7

DIMENSIONS

Overall length :	38.35m
Water line length (Full load) :	33.15m
Beam :	8.1m
Draft :	2.6m
Displacement :	210 tonnes

RANGE AND SPEED

Top speed :	16.5 knots
Range :	1700 nautical miles at 12 knots (calm sea)
Range :	2400 nautical miles at 10 knots (calm sea)



PROPULSION AND THRUSTERS

N.2 diesel engines CATERPILLAR MOD. C32 ACER commercial EPA T3 970 KW (1300 HP) @ 1800 rpm

N.2 fixed pitch propellers 5 blades

Electric bow thruster pw 75 KW

Electric stern thruster pw 75 KW

CMC Stabilizers STABILIS ELECTRA SE80-7-4-200

GENERATORS

N.2 generators KOHLER MOD. 80 EFO2DJ 230/400 V 3PH 50 HZ DA 80 KW each with parallel

TANK CAPACITIES

Fuel tanks 29.000lt

Fresh water tanks 8.800lt

Lubricating oil tank 240lt

Sewage tank 2.000lt

Bilge waste-water tank 650lt

Waste oil tank 520lt

EQUIPMENT

Air conditioning plant 270.000 BTU

N.1 water maker 250 lt/hr with antibacterial filter, UV treatment and silver ions dispenser

Sewage treatment plant compliant to the IMO MEPC. 159(55) rules

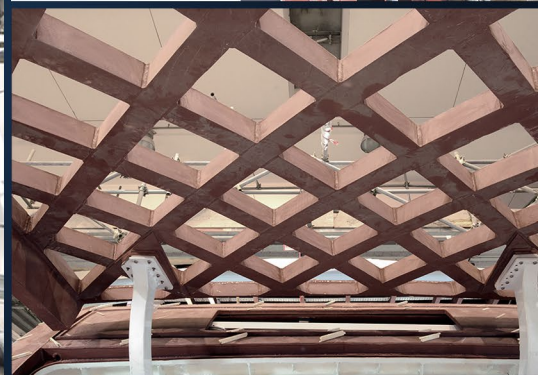
Waste bilge water plant compliant to IMO MEPC 170(49) rules

N.2 water heaters 400lt each





Top Left: Bow view | Bottom Left: Pilot house, upper deck | Right: Main deck living area with view to dining area



Main: Garage View | Top and Lower Right: Garage door open / close (detail)





GIANETTI

CUSTOM YACHTS

Tel : +39 348 333 4157 Email : fabrizio@gianettiyachts.com

Shipyard : via Marina di Levante 15 . 55049, Viareggio

LU Office : via S.Andrea 35, 55049, Viareggio- LU

This brochure is based on information available at the date of publication. The data contained in the brochure may not cover all particulars, technical and commercial changes subsequent to the date of issue, nor accurately predict or report all possible scenarios. Gianetti Yachts reserve the right to implement additional technical or commercial changes without prior notice.

© Copyright 2021 Gianetti Yachts

WWW.GIANETTIYACHTS.COM